



Product presentation

ROOF EXPERT AC



- » Waterproofing membrane protects the whole object or parts of it from the damaging effects of water.
- » Water causes wood decay, corrosion of metals and at low temperatures (ice) destroys stone, concrete, brick and mortar.
- » For waterproofing, it is necessary to use waterproofing membrane which in permanent contact with water remain unchanged.



ROOF EXPERT AC

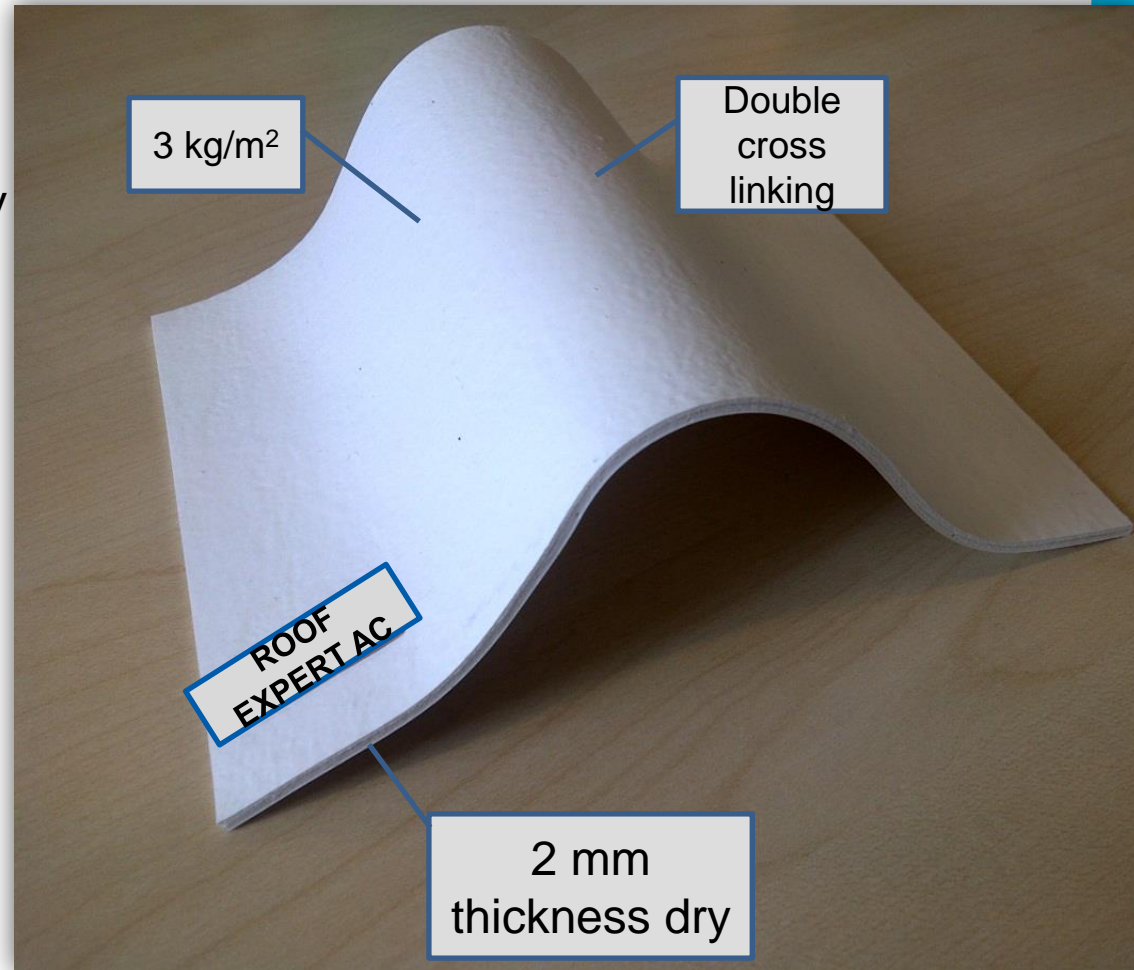


- » Flexible, liquid, environmental friendly, water based membrane for roof waterproofing protection



FLEXIBLE ROOF COATING

- » Environmentally friendly technology:
- » Excellent crack bridging ability
- » Highly flexible down to -20°C temperature
- » Highly resistant to UV aging, heat aging and temperature changes
- » Very resistant to dirt pick up
- » No stitches
 - » easy to repair



BENEFITS

- » Resistant to rain already after 90 min
- » Walkable already after 3-4 hours
- » Ideal flow around chimneys, ventilation exits, dilatations, etc.
- » Ideal for overbridging joints of different materials
- » Excellent adhesion on
 - » concrete, steel, wood, old bitumen, PU etc.



CHARACTERISTICS

- » Easy application
- » No torch
- » No smell
- » Seamless
- » Ready to use
- » 1K system



STRONG TECHNOLOGY

- » Excellent technology for new roofs w/o heavy traffic



STRONG TECHNOLOGY

- » Ideal solution for renovation of old bitumenous roofings

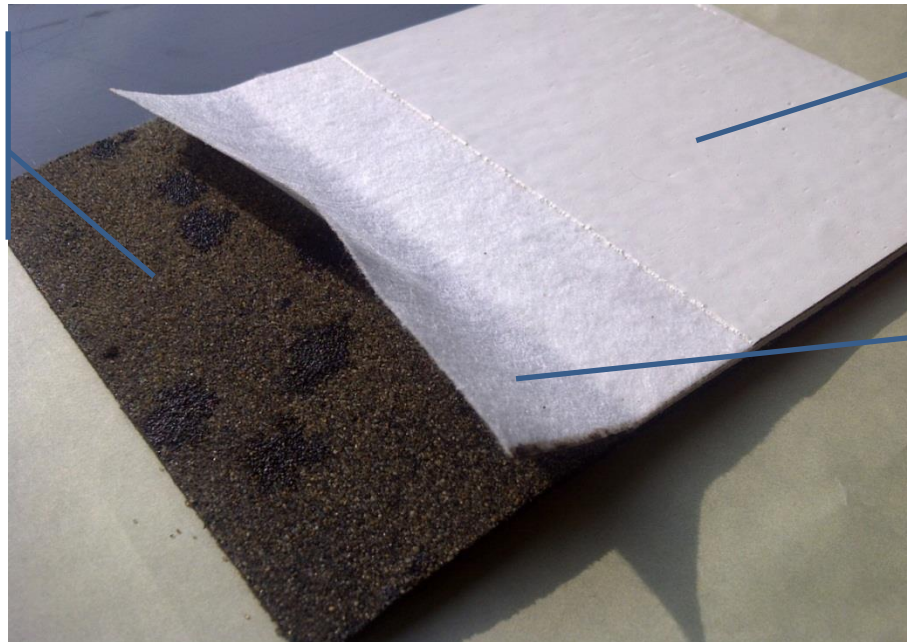


ROOF EXPERT AC



Old bituminous roofing's - renovation

Old
bituminous
roofing
sheets

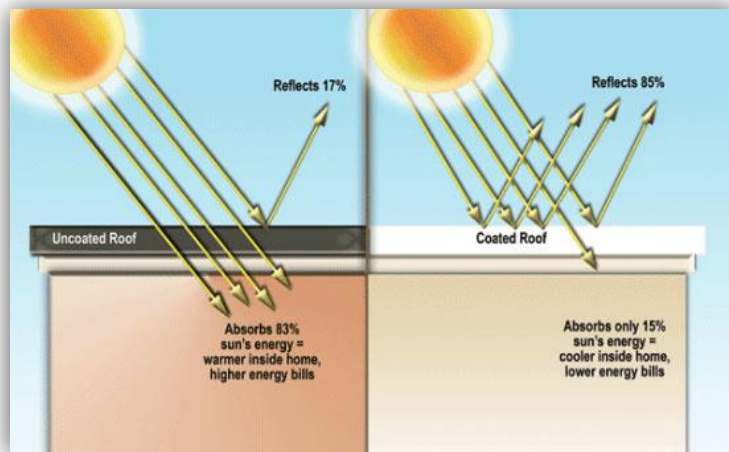


Flexible flat
roof coating

Reinforcement
fiber mash

HEAT REFLECTION

Heat reflection below roof coat $>20^{\circ}\text{C}$



Thanks to the high reflection of solar energy, Roof expert AC reduces the "heat island" effect in urban environments and gives low temperature to the roof, thus increasing its durability.

APPLICATION FIELDS



- » Flat or inclined roofs
- » Vents, chimneys
- » Cupolas and curved roofs
- » All construction materials
 - » mortar, concrete, brick, stone, existing bitumen sheaths, roof tile, metallic surfaces, etc.
- » Colors available
 - » White, Gray RAL 7016 / 7035, Brown RAL 8028, Oxide red RAL 3009 i Green RAL 6011
- » Tested according to
 - » EN 1504-2 coating (C) principles PI, MC i IR (thickness 1,0 mm)

SUBSTRATE PREPARATION



» Concrete and mineral substrates

- » solid and dry with no rising damp
- » all hollows must be repaired with Expertan RM 02
- » primer: Roof expert AC diluted with 10% of water
- » particularly loose substrates- Roof expert C primer

» Bituminous membranes

- » hydro-blast the surface and dry
- » do not use on bituminous membranes that have only recently been applied (< 6 months)
- » primer: Roof expert AC diluted with 10% of water

» Metal substrates

- » clean and mechanically activate the surface
- » primer: Roof expert M primer (undamaged galvanized zinc)
Roof expert MC primer (damaged metal surface)

APPLICATION DATA

» Waiting time / Overcoating

Ambient conditions	Min waiting time
+5 °C / 50 % r.h.	20 h
+15 °C / 50 % r.h.	10 h
+23 °C / 50 % r.h.	8 h

» Applied product ready for use

Ambient conditions	Touch dry	Rain resistance	Full cure
+5 °C / 50 % r.h.	12 h	18 h	96 h
+15 °C / 50 % r.h.	3 h	5 h	72 h
+23 °C / 50 % r.h.	2 h	3 h	48 h

Note: Times are approximate and will be affected by changing ambient conditions particularly temperature and relative humidity. The times indicated are for a one coat.

SPREADING RATE



- » 0,2 – 0,3 – as primer
- » 1,5 kg/m² – protective finish: 0,75 kg/m² first coat
0,75 kg/m² second coat
- » 3 kg/m² – waterproof coating: 1,5 kg/m² first coat
1,5 kg/m² second coat
- » 3 kg/m² – reinforced waterproof coating: 2,0 kg/m² first coat
1,0 kg/m² second coat

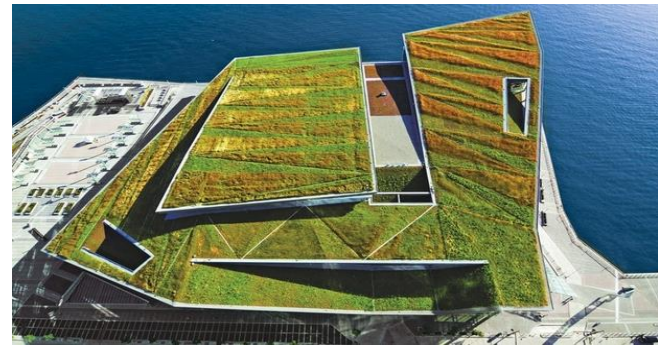
The consumption rates indicated are for a seamless film on a flat surface and could be higher on uneven substrates and according to the absorbency of the substrate

ROOF TYPE

Solar



Green



Exposed / Unaccessible



Balasted



APPLICATION

Application 1



Application 2



Application 3



Application 4



AFTER APPLICATION

Roof 1



Roof 2



Roof 3



AFTER APPLICATION

Roof 4



Roof 5



Roof 6

